



A NEW VISION

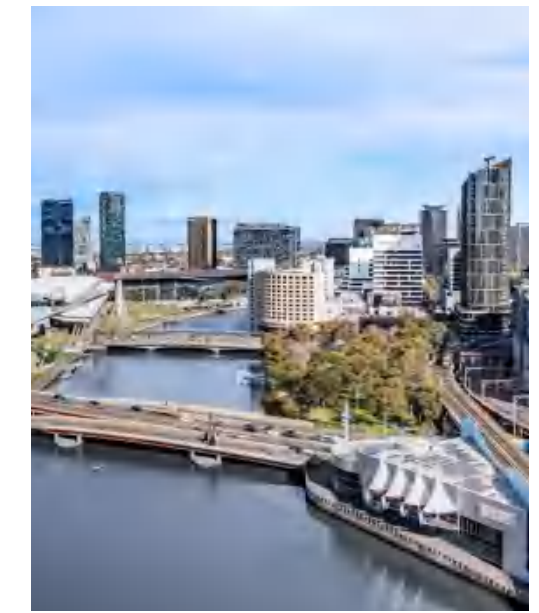
INFORMATION MEMORANDUM

18-38 SIDDELEY STREET, MELBOURNE

THE NEXT CHAPTER FOR WORLD TRADE CENTER MELBOURNE

Our mission is to serve as the premier gateway for China-Australia trade, fostering economic cooperation and cultural exchange. We empower businesses to thrive in both markets by providing world-class facilities, comprehensive support services, and unparalleled networking opportunities, driving sustainable growth and mutual prosperity.





STRATEGICALLY LOCATED IN THE HEART OF MELBOURNE

World Trade Center Melbourne is strategically positioned in the heart of Melbourne. It benefits from its proximity to key landmarks, including the Yarra River to the south, the Melbourne Convention and Exhibition Centre, and Southern Cross and Flinders Street Stations, all within a short walking distance. Additionally, its location within the Free Tram Zone ensures excellent connectivity and accessibility.



A BUILDING OF
OPTIONS AND FLEXIBILITY

Presents a rare opportunity to lease
coveted office space within a globally
recognized Melbourne icon.



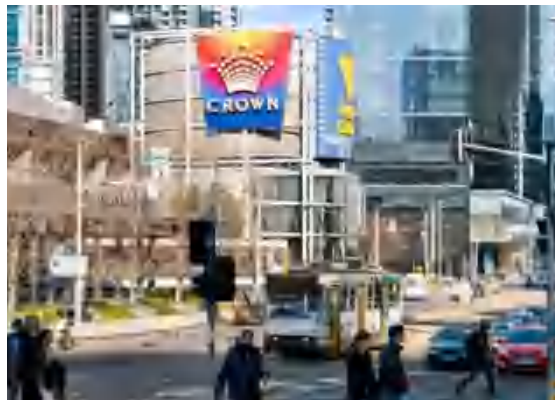
Floor Space **14,000 m²**
Building Area **76,000 m²**

Office Space **45,000 m²**
Exhibition Space **3,000 m²**

Catering & Retail **3,200 m²**
Parking Spaces **313**

TRANSPORT HUB

Situated within Melbourne's Free Tram Zone, the World Trade Centre Melbourne offers convenient transportation access at any time of day.



It is within walking distance of both Docklands and Southbank, key areas in Melbourne's planned development, and a brief stroll to the central CBD. Additionally, it is conveniently located near Southern Cross and Flinders Street train stations, providing easy access to major road arterials and connections to the airport and various parts of Melbourne.





NEWLY ACTIVATED TERRACES WITH STUNNING YARRA RIVER SHOTS

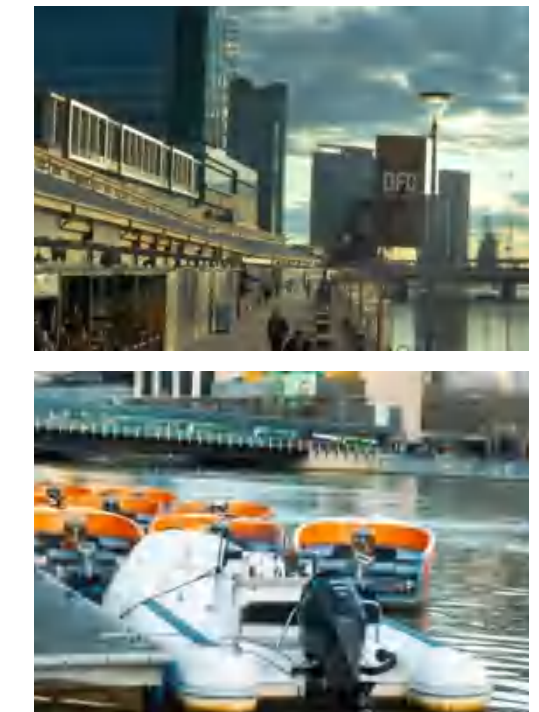
World Trade Centre Melbourne 's horizontal terraces will allow an opportunity to create places for people to connect and unwind. These terraces maximise the building's spectacular views across the river and create unique environments for people to work, meet, or relax.





EXCLUSIVE AMENITIES

As the sole waterfront office building in Melbourne's CBD, this property features a 1,000-meter river walkway. Enhance your work-life balance with amenities including an on-site kindergarten and secure parking. The facility is also equipped with end of trip facilities, allowing you to begin your day refreshed and energized.



BUSINESS FACILITIES

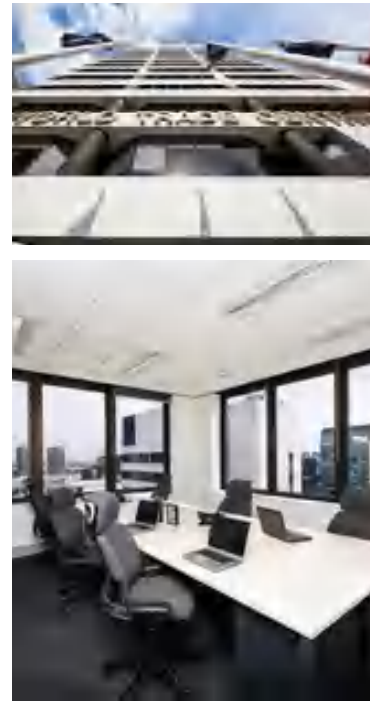
World Trade Center Melbourne provides all the amenities typically associated with a centrally located commercial office building. However, what distinguishes the WTC is that leasing space here grants you access to a suite of services designed to facilitate trade between China and Australia. These services include, but are not limited to, business and marketing support, networking events, and valuable connections to the Chinese market, among other benefits.



EXCELLENT RETAIL OFFERING

The ground-floor retail tenancies at World Trade Centre Melbourne offer unparalleled convenience for employees. With a variety of options for morning coffee, casual takeout lunches, and waterfront dining, everything you need is readily accessible right at your doorstep.





A CHINA-AUSTRALIA BUSINESS SERVICE HUB

World Trade Center Melbourne serves as the premier business hub for China-Australia trade. Featuring expansive floor plates ranging from 5 sqm to 2,408 sqm, the building offers businesses exceptional flexibility, fostering ample space for collaboration and interaction.

Designed with a contemporary aesthetic, the office interiors are crafted to provide a functional and efficient workspace, equipped with all the modern amenities required by today's workforce. In addition to office spaces, the WTC includes versatile areas for conferences, conventions, and exhibitions, supporting product displays and business services. This comprehensive facility is designed to facilitate seamless trade and business interactions between China and Australia.



IMAGE BY COMPASS

ENTERPRISES





CONTACT US

Established in Melbourne, Australia in 2018, United Development Melbourne Pty Ltd is a comprehensive real estate group specializing in investment, development, leasing, and management. Our portfolio includes city centre retail complexes, as well as commercial and residential land projects.

Committed to the principle of "customer first," we offer a wide range of personalized solutions. Through standardized and professional management, we aim to enhance service quality and customer satisfaction.

Related company
UDS (<https://udsaustralia.com.au>)

CONTACT US TO SET YOUR
INTERNATIONAL BUSINESS DREAMS
IN MOTION!

Address: 18/38 Siddeley St, Docklands VIC 3008

Email: udmadmin@udmau.com

Website: <http://udmaustralia.com.au/>

Phone: +61 439 819 653



Instagram